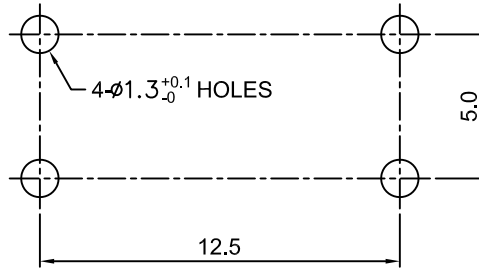
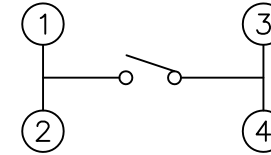


PCB MOUNTING HOLES



CIRCUIT DIAGRAM



OPTIONAL SPECIFICATION

EST-1103A -

No	[Operating force]
1	130gf
2	160gf
3	250gf

SPECIFICATION

1. RATING : DC 12V 50mA
2. TRAVEL : 0.25±0.1mm
3. CONTACT RESISTANCE : 100mΩ MAX
4. DIELECTRIC VOLTAGE : 250V AC for 1 min
5. LIFE CYCLES

OPERATING FORCE	LIFE CYCLES
130±30gf	300,000 CYCLE
160±50gf	300,000 CYCLE
250±50gf	100,000 CYCLE

REVISION	REVISION DATE	DESCRIPTION OF REVISION	SIGN	APP
4				
3				
2				
1				

TOLERANCE UNLESS OTHERWISE STATED

less than 10 _____ ±0.1
 10~30 _____ ±0.2
 30~100 _____ ±0.3
 ANGLE _____ ±5°

NO,	PART NAME		Q'TY	MATERIAL	SPEC	TREATMENT	REMARK
DESIGN	CHECK	APPROVE	TRACE	SCALE	TITLE	TACT SWITCH EST-1103A Series	
JH CHOI		HS KIM		N.S			
EASTERN CO.,LTD					DRAWING NO,		
					DATE	2021-06-01	